



# Seraphim' s New Module Eclipse



# Behind the Eclipse

How do you define a perfect solar module?

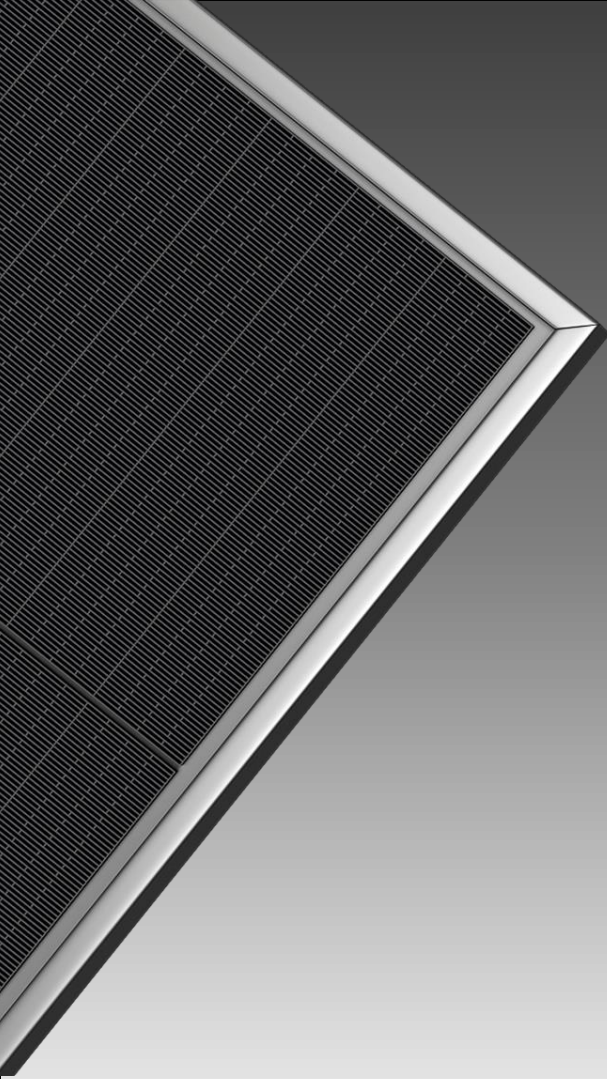
# Shift with Innovation

A significant breakthrough in module innovation



# Breakthrough in cell technology

Increase the available cell space to absorb more sunlight



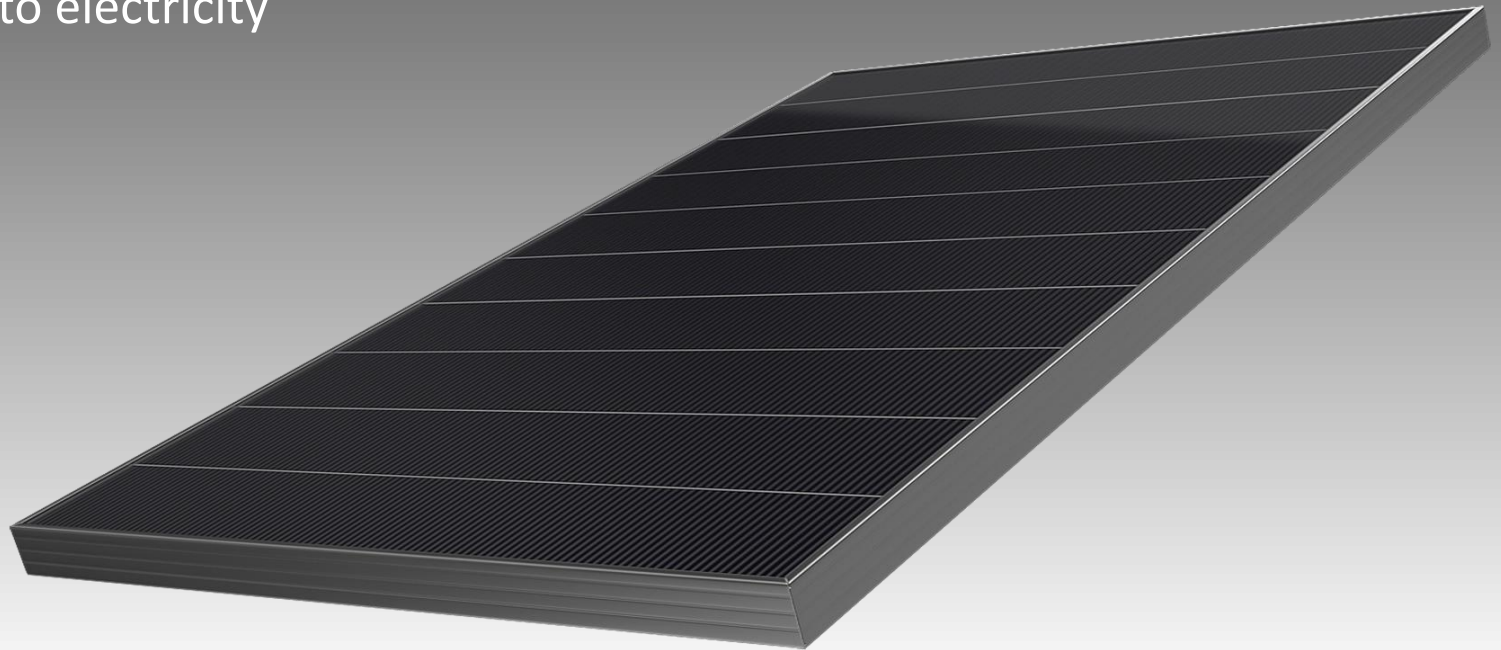
# Innovative technology for interconnecting the cell

Minimize the electrical losses from cell to cell,  
higher efficiency and enhanced stability



# Unique Production method (patent pending)

Increases the modules active area, to convert more Sunlight into electricity



## Mono

Module Efficiency

**18.8%**

Module Output

**320W**



## Poly

Module Efficiency

**17.1%**

Module Output

**290W**

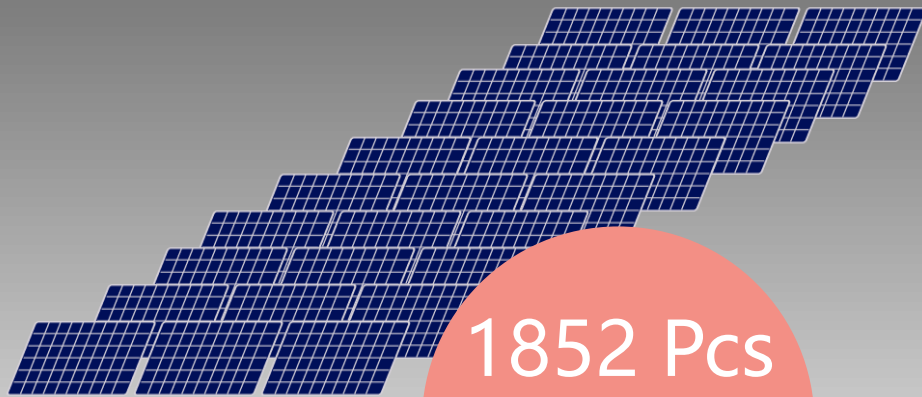
# Higher Yields , Higher Returns

Module Type	SRM-6MB-270W	<b>Eclipse 310W</b>
Module Quantity	18	<b>18</b>
System Size	4.68kW	<b>5.58kW</b>
Energy output	5346kWh	<b>6138kWh</b>
Returns	根据区域自行测算	根据区域自行测算



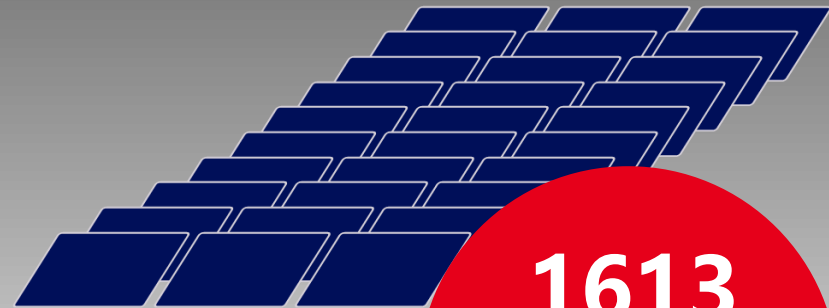
# Saving >8% System Space

500kW PV System  
( SRM-270-6MB )



1852 Pcs  
3000m<sup>2</sup>

500kW PV System  
( Eclipse 310W )



1613  
Pcs

2737m<sup>2</sup>

# Lower Cost, Higher Efficiency

Name	Cost ( ★=Cost growth )	Module Efficiency ( % )
PERC	★	0.5-1.5%
PERL	★★	1-2%
PERT	★★	1-2%
HIT	★★★	5-6%
IBC	★★★	5-6%
RIE	★★	0.4-1%
<b>Eclipse</b>	<b>★</b>	<b>0.5-4%</b>



[www.seraphim-energy.com](http://www.seraphim-energy.com)